

FIRST BOLT

A NETWORK RAIL ACCEPTED PRODUCT (Cert No.PA05/348)

Catalogue No.	Part No.	Description	Rec. Torque Setting
57/023498	LS1125/S	1" 1/8 Flat Bottom	750 Ft-lbs
57/023495	LS1000/FB	1" Flat Bottom (Pre 1975 Rail)	650 Ft-lbs
57/023497	LS1000/S	1" Bull Head	650 Ft-lbs

**SPECIAL TOOL REQUIRED FOR HOLDING THIN NUT:-
FIRST BOLT SPANNER FBS/47L (CAT No. 039/052312)**

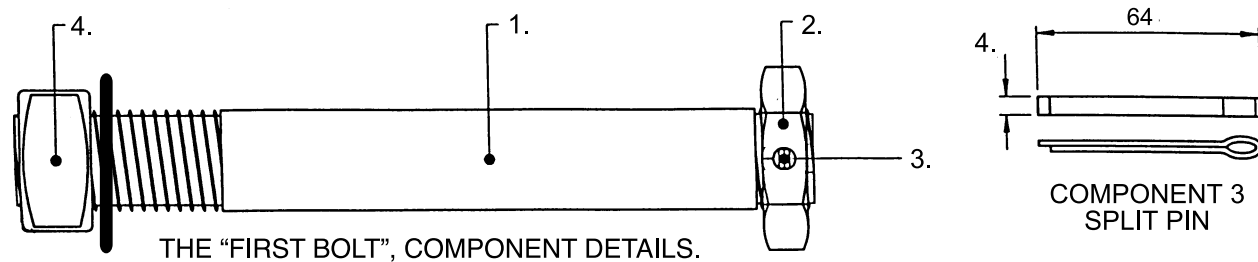
IMPORTANT!

Each bolt and component parts should always remain as a set as the components are not interchangeable

When installing the bolt always ensure that the identification lettering on the bright side of the thin nut is facing out.

INSTALLATION PROCEDURE

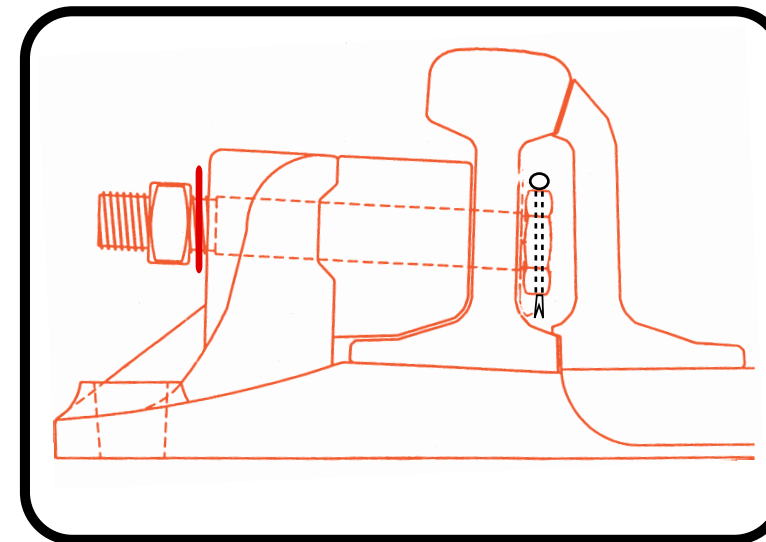
- Disassemble the split pin (component 3) and thin nut (component 2) from the studbolt (component 1).
- Align the block to allow the bolt to pass freely through the hole.
- Push the bolt through ensuring the split pin hole in the bolt is vertical.
- Screw the thin nut until hand tight onto studbolt (component 1.) making sure bright side on thin nut (component 2.) faces outward.
- Push the split pin through the nut and bolt.
- Tighten thick nut and washer to ensure that the rail, block and chair are drawn fully together.
- Torque thick (component 4.) nut to recommended Network Rail specification.(Refer to above table)



FIRST BOLT

A NETWORK RAIL ACCEPTED PRODUCT (Cert No.PA05/348)

INSTALLATION OF THE FIRST BOLT WILL INCREASE PRODUCTIVITY AND REDUCE DELAYS



Benefits

- Quick and easy to install
- Can be fitted easily on all slide chair positions
- A full section bolt that allows gauge adjustment
- Can be removed and replaced without the disconnection of signalling equipment

*For many years broken slide chair bolts have caused major disruption on switch and crossing layouts - **First Bolt** is the solution to this problem*



Lesmac (Fasteners) Limited
73 Dykehead Street, Queenslie Industrial Estate
Glasgow G33 4AQ
Tel: 0141 774 0004 Fax: 0141 774 2229
e-mail: sales@lesmac.co.uk
website: www.lesmac.co.uk