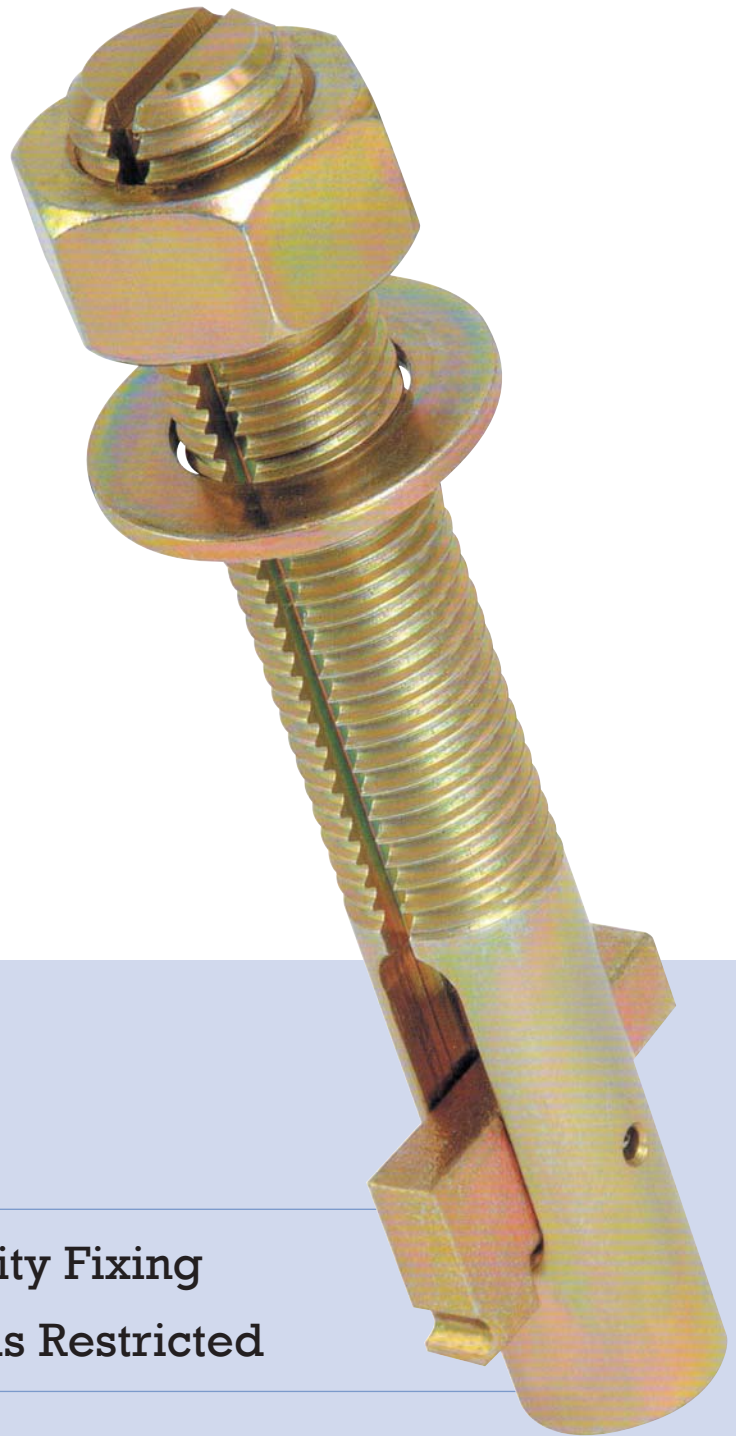
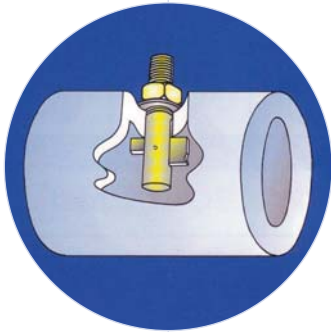
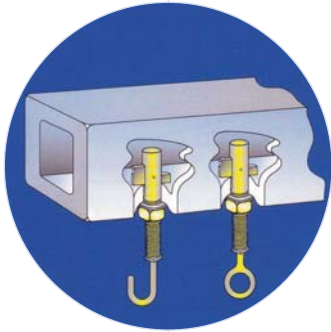


HIGH PERFORMANCE CAVITY FIXING BLIND BOLT



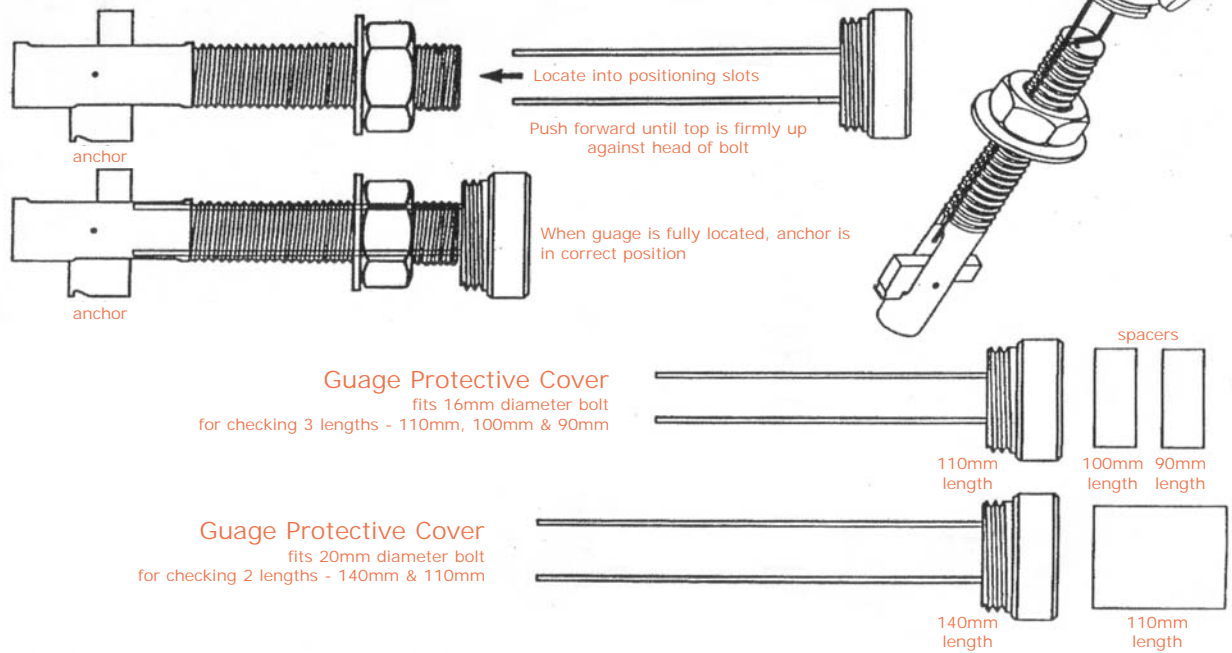
- High Performance Cavity Fixing
- For Use where Access is Restricted



Lesmac Fasteners Ltd
73 Dykehead Street
Glasgow G33 4AQ
tel : 0141 774 0004
fax: 0141 774 2229
e : sales@lesmac.co.uk

HIGH PERFORMANCE CAVITY FIXING BLIND BOLT

SAFETY CHECK GAUGE TO CONFIRM ANCHOR IS FULLY OPEN



- Safe and Simple to Install
- No Special Tools required for Installation
- No Oversize Holes Needed
- Can be Removed without Damage
- Versatile Fixing Capability

M20x110 and M20x140 Blind Bolt are used for mounting the AWS equipment device to steel sleepers. Railtrack have identified advantages of using steel sleepers over conventional materials of wood and concrete, however, this presented a fixing difficulty. Installation is required on site with the need to remove equipment for maintenance.

Blind Bolt allows the attachment of all AWS components to the steel sleepers from the upper surface without the need for access to the underside.

In this application Blind Bolts can be removed, so allowing for maintenance.

M20x110 AWS Kit - cat no. 57/150001

M20x140 AWS Kit - cat no. 57/150002



Lesmac